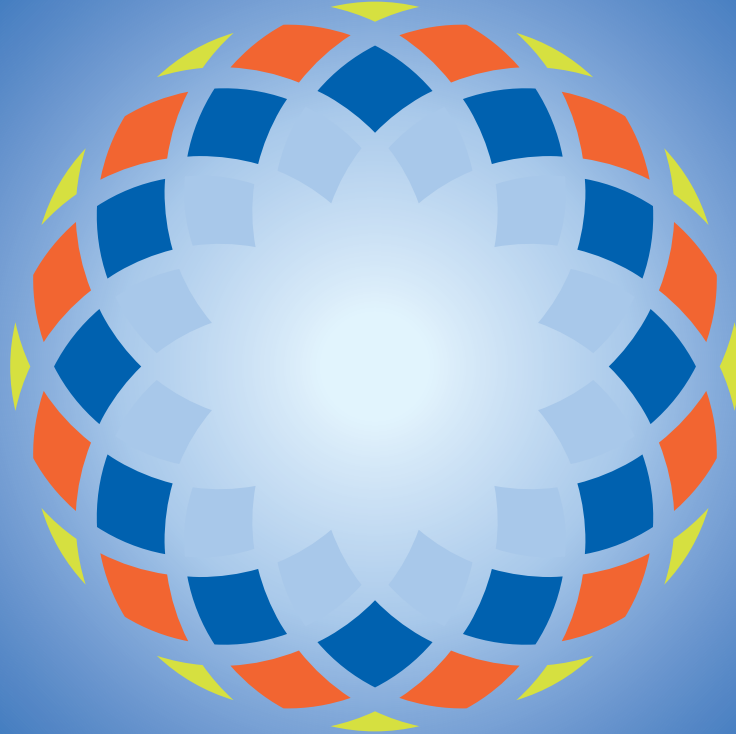


BE WELL OC



Clayton Chau, MD, PhD
Regional Executive Medical Director,
Institute for Mental Health & Wellness, Providence St Joseph Health
Associate Clinical Professor of Psychiatry, UCI Medical School
Clayton.Chau@stjoe.org

Moving toward a community of action.



Mental health is “a state of well-being in which every individual realizes his or her own potential, can cope with normal stresses of life, can work productively and fruitfully, and is able to make a contribution to his or her community.”¹

Vision: Be Well Orange County will lead the nation in optimal mental health² and wellness for all residents.

¹ World Health Organization. Mental Health: A State of Well-Being, 2014. http://www.who.int/features/facilities/mental_health/en

² In the following document, the terms mental health and wellness encompass substance dependence and abuse.

Ecosystem Today



Ecosystem
Tomorrow



Public & Private Sectors, Academic Institutions, Faith Communities and Others Unified for Collective Impact and a New Model of Mental Health Care

AAP-OC
ACC-OC
All4Kids
AlzOC
Bank of America
Beacon Health Options
Blue Shield CA Foundation
CSUF
CalMHSA
CalOptima
Cambodian Family
CapoUSD
CDCR
CFOOC
Chapman University
Child Guidance Center
Children's Bureau
Childrens Cause OC
CHOC
City of Anaheim
City of Irvine
City of Costa Mesa
City of Laguna Beach
City of Orange
City of Tustin
College Hospital
County of Orange
Diocese of Orange
Early Childhood Mental
Health Collaboration
First 5 OC
Green Ribbon Club
HASC
Health Collab
Health Net
Hoag



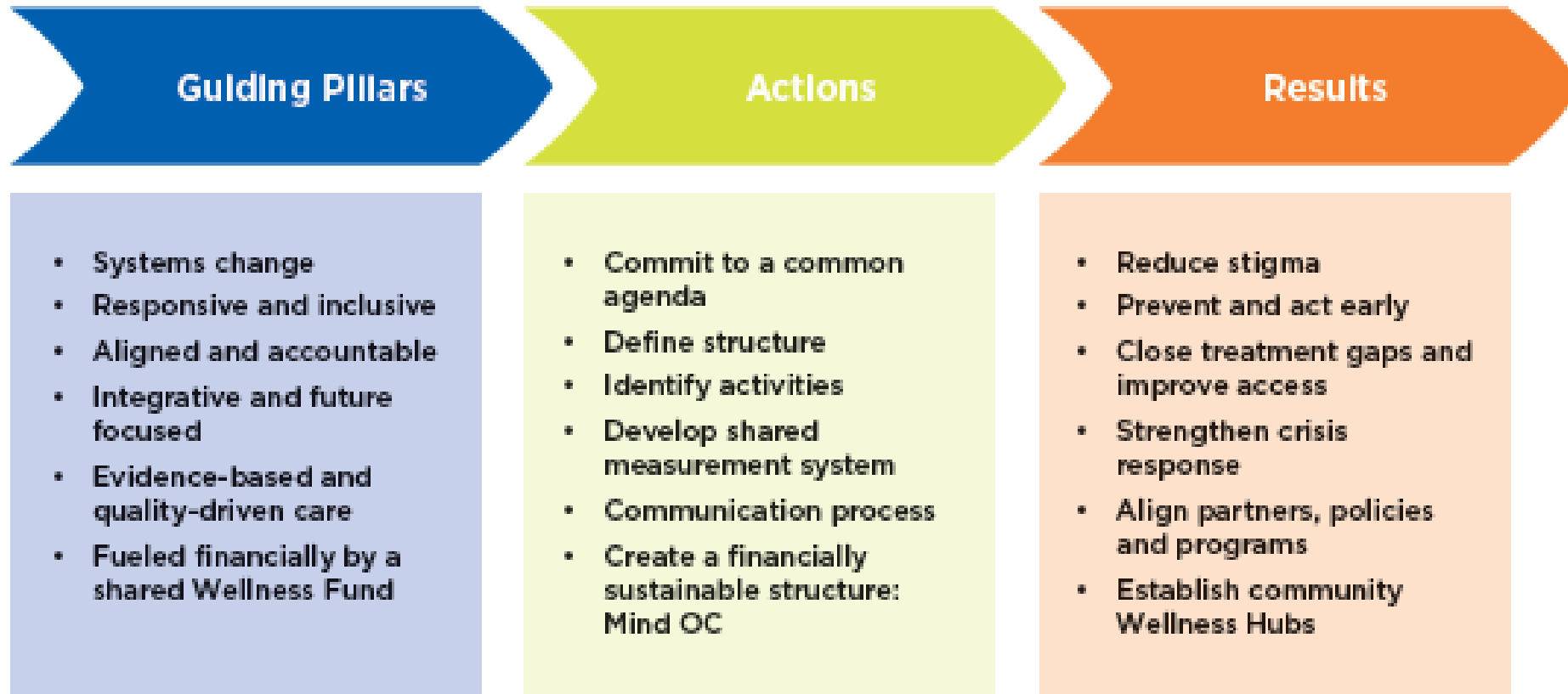
Illumination Foundation
Jamboree Housing
James Henry Ransom
Foundation
Kaiser Permanente
KC Services

KPC Health
Legal Aid
Magellan Health
MECCA
MemorialCare
Mental Health Board

MF Partners
MHS OAC
Moms OC
NAMI OC
OC Alcohol & Drug Advisory
Board
OC Conservator Assistance
Group
OC Health Care Agency
OC Public Health
OC Sheriff Department
OC Stem
OCDE
OCWomensHealth
Orange USD
Providence St Joseph Health
RCBD
RCBO
Saddleback Church
Salvation Army
Samueli Foundation
SARDA
SHM Temple
South Coast Plaza
SSA
Telecare Corp
Tenet Health
UCI
United Way OC
VACF
Vietnamese American Cancer
Society
Well Being Trust
Western Youth Services
Community Leaders,
Philanthropists & Others

3-Part Blueprint to Build the Ecosystem

Be Well OC is not simply a new set of services, or business as usual. The Blueprint provides a formal and structured roadmap to transformational system change.



Pillars for Action




Six core pillars for action will create and sustain a transformed mental health and wellness ecosystem. The pillars were developed through input from numerous stakeholders participating in the OC Coalition System of Care work group and will be operationalized by Be Well OC:

1. System Change

Be Well OC is not simply a new set of programs and services, or business as usual. This transformation provides a formal and structured vehicle for strong cross-sector partnerships (e.g., public-private, faith-based, education, business, health, mental health and substance use, housing, social services, and others) to create a better aligned and coordinated system of care to have a larger positive impact than the traditional mental health care sector alone. New services and supports, and effective existing services, will be leveraged and coordinated strategically to improve timely access, close treatment gaps, and create seamless transitions in care coordination across hospitals, clinics, community-based organizations, and providers.

2. Responsive and Inclusive

Be Well OC aims to meet the mental health needs of all residents, regardless of payer. Individuals need timely access to care for the whole person, based on each person's beliefs, needs, culture, family and support systems, views about wellness, and individual strengths and resources. Addressing population disparities in mental health and substance use care means ensuring parity of access (i.e., notwithstanding race, ethnicity, gender, sexual orientation, age, cognitive ability, insurance/economic status, geography) and providing culturally responsive services without stigma in the context of the individual's primary language, spiritual, and value systems.




3. Aligned and Accountable

Be Well OC will ensure that a shared measurement, evaluation, and quality improvement approach is aligned to support services and activities with accountability, transparency, and resource optimization. To maximize the impact of existing and new investments and programs in mental health and wellness, Be Well OC will promote and support the collaboration of public and private organizations investing in mental health and wellness activities. Engaging local residents in shaping and defining expectations for this new approach to mental health and wellness will further provide important accountability for achieving desired outcomes.

4. Integrative and Future Focused

Be Well OC will be whole-person, whole-family³, and whole-community centered to address the mental, emotional, social, physical, environmental, and spiritual determinants of overall health and wellness. To achieve individual and population mental health and wellness, services and supports within the system of care will be provided in coordinated collaboration, and seamlessly integrated where possible, across sectors to leverage value-added capacity within cities and communities across the county.

Outcomes of recovery and resiliency will be supported through a workforce that includes non-licensed community health workers and peer providers. Be Well OC will leverage new technologies and digital capabilities to augment traditional resources and service offerings based on evolving preferences of consumers. The Be Well OC Ecosystem will create spaces for healing and connection, and consider alternative ways to foster health through community gardens, exercise, and mindfulness activities.



³ When a child is being served, mental health services apply not only to the individual, but to the family. Services that are child-and family-centered involve family members' participation in educational and clinical services, as well as attention to the health care needs of all family members.

5. Evidence-Based and Quality-Driven Care

Be Well OC will ensure that:

- Providers demonstrate core competencies in mental health and substance use services, including screening and identification of need, referral protocols, and integrated care models
- Services are delivered through person-centered, team-based care with consistent use of proven integrated care models
- Prevention and early intervention, evidence-based practices, and promising practices are used wherever possible to optimize mental health and well-being, as well as effective clinical outcomes and cost effectiveness
- A shared measurement system (e.g., dashboard) is designed and implemented, that leverages available clinical data for population health management and tracks progress on improving community health

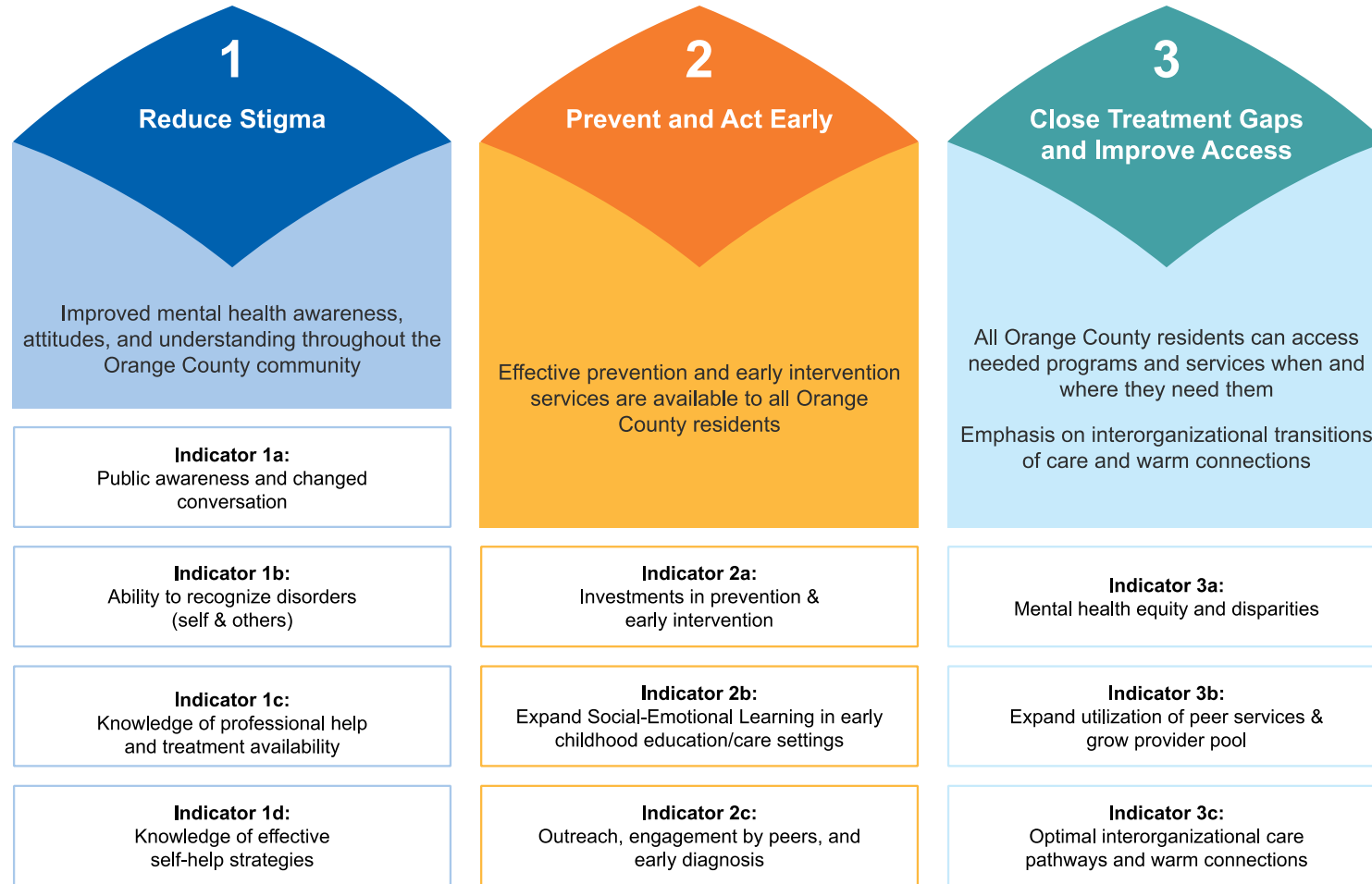
6. Fueled by a Mind OC Wellness Fund

Be Well OC will establish a Wellness Fund that attracts, aligns, and braids public and private funding and resources (e.g., grants and private / corporate philanthropy) to support common goals. To ensure long-term sustainability, Be Well OC will establish financial goals, strategies, and action plans geared towards building a diverse portfolio of resources, including in-kind commitments from partners, grants, braided funds, and reinvested health care savings resulting from cost effective strategies and service efficiencies.

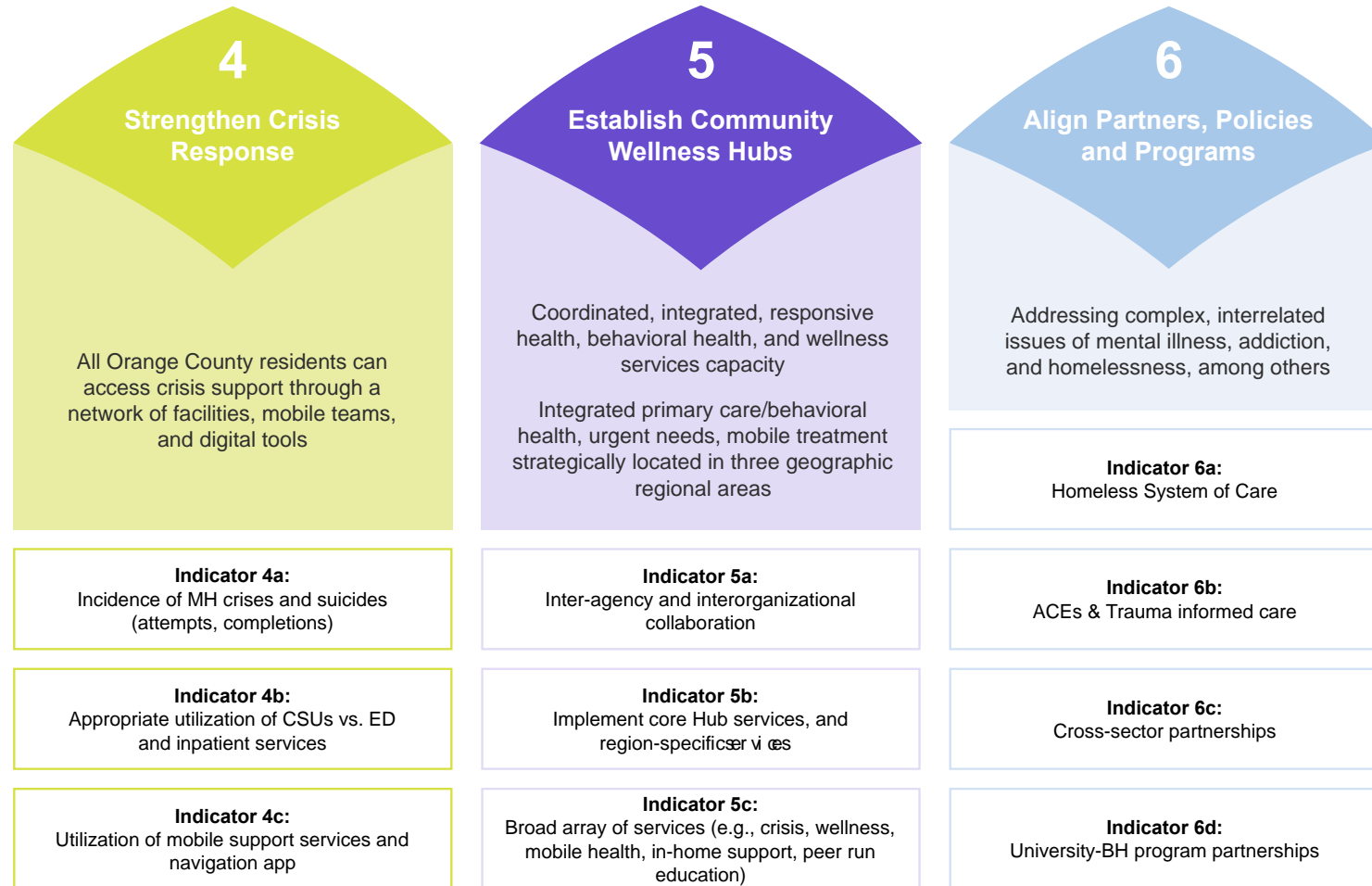
Distributed Leadership Structure for Collective Impact



The 6 Results



The 6 Results



The Start of Systems Change

Regional Wellness Hubs are one component of the Be Well Ecosystem. An essential component.

Regional Wellness Hubs are One Component of the Be Well Ecosystem.

An Essential Component...



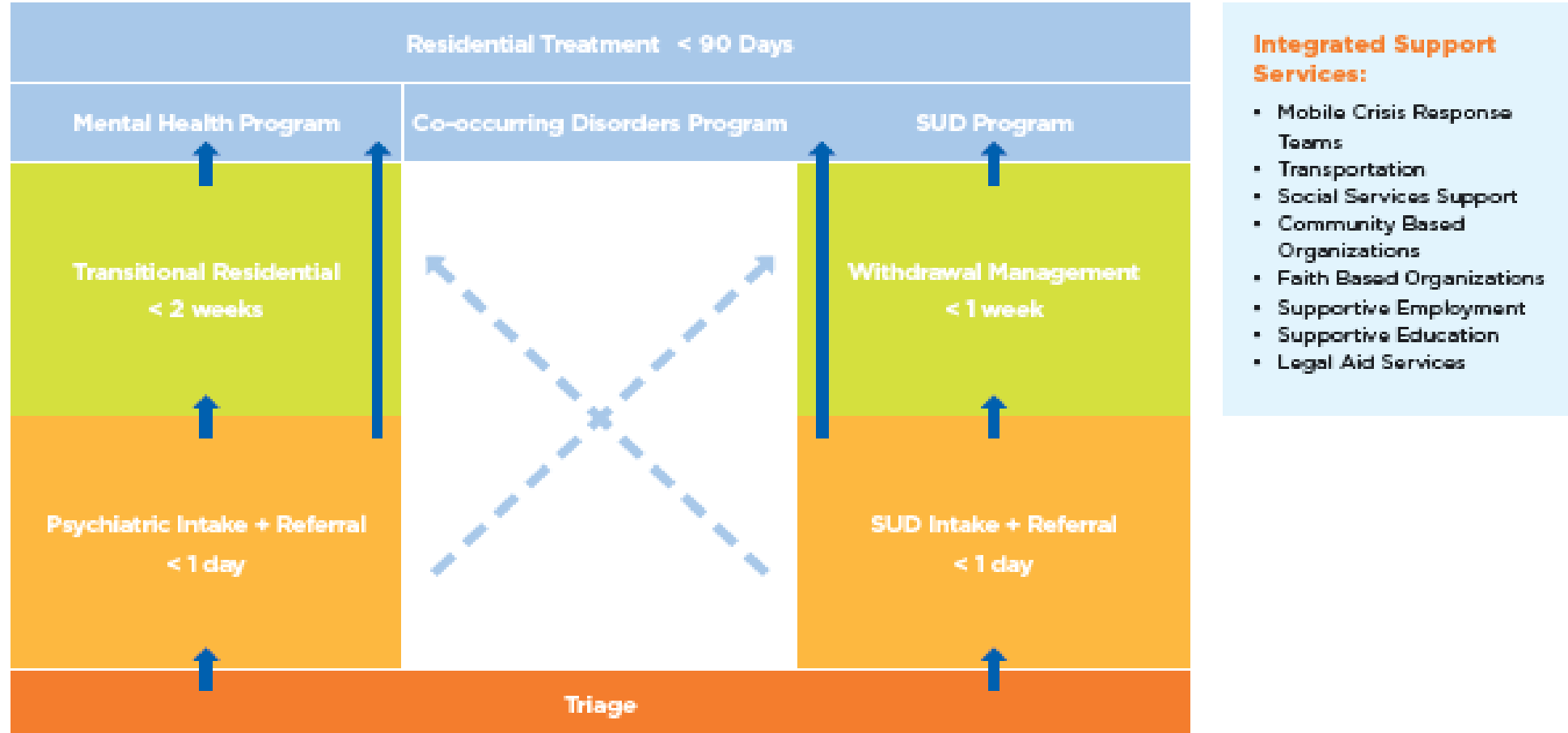
Let's build the beginning.

A beacon that illuminates a hopeful path forward for Orange County.



Proposed Program

The sum is greater than the parts. Integration of mental health and substance abuse services in a central, easily accessible location improves access. Coordination in care and operational synergy among services improves experience for patients and providers. Co-locating community-based social support services honors whole-person needs and a whole-systems approach, improves outcomes and reduces recidivism.



*See Appendix for Program Access Projections and Discharge Planning.

Be Well Journey to Date

- Coalition quarterly meetings
- Workgroup meetings
- Blueprint Reveal – June 2018
- Summit – August 2018
- Results Meetings
- Be Well Youth Committee Meetings
- Building of one regional wellness hub
- Community Zero Suicide Taskforce monthly meetings



Thank You!

Be Well!

